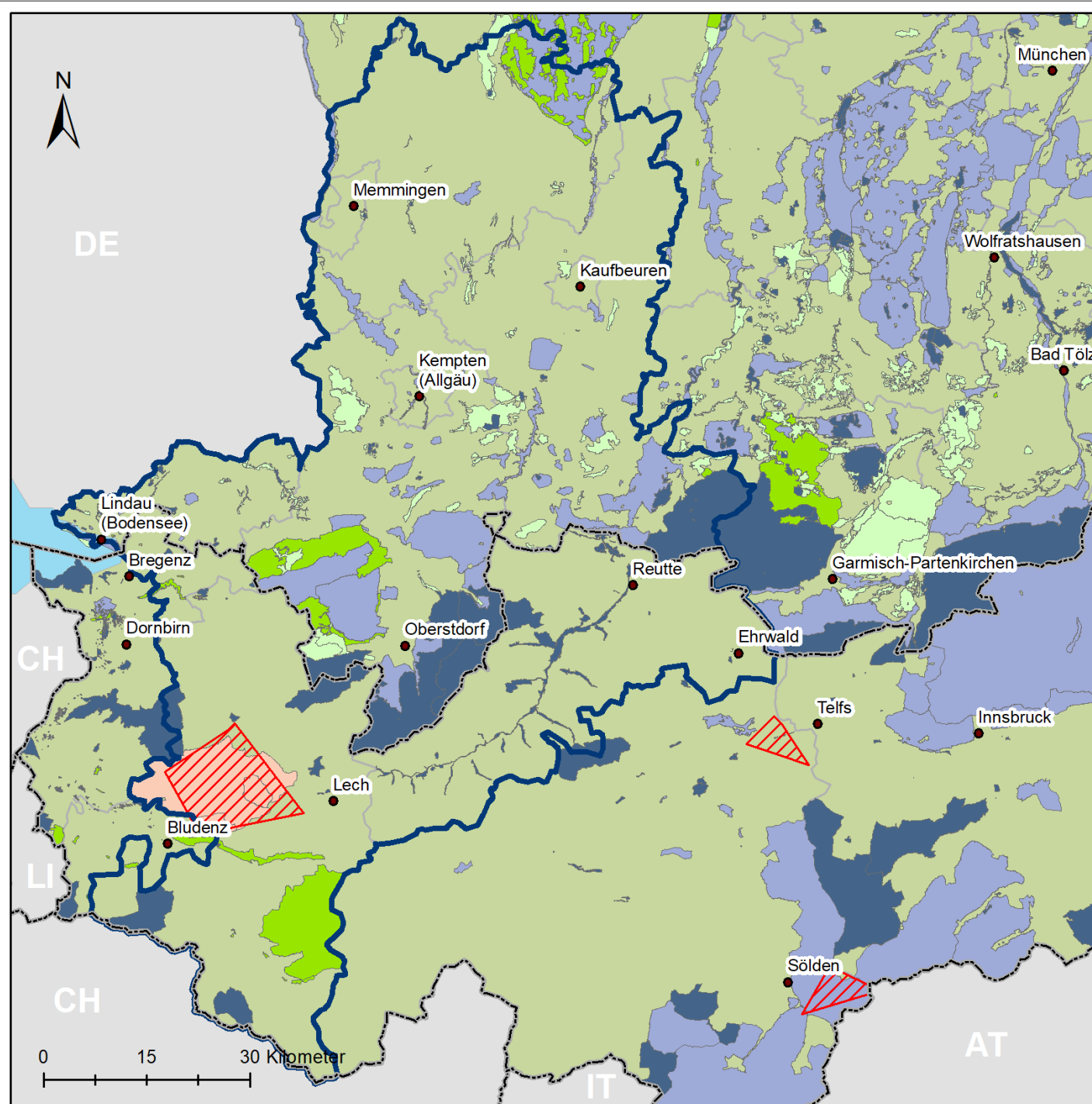


# Schutzgebiete Euregio Via Salina




## Legende


— Euregio Via Salina


- - - Nationale Grenzen


## UNESCO heritage sites


 UNESCO biosphere reserves


## IUCN Code

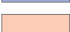
 II - national park


 III - national monument or feature


 IV - habitat/species management area

 Ib - wilderness area

 V - protected landscape/seascape

 VI - protected area with sustainable use of natural resources

 not assigned

 OSM protected area

Räumliche Auflösung: NUTS3 (2016)

Entwurf & Kartographie: FAU Erlangen-Nürnberg

Anja Sperr, Markus Lambracht & Tobias Chilla

Kartengrundlage: © Eurostat (ESTAT) - GISCO

Datengrundlage: CDDA version 15 (2017) via EEA

Natura2000 (2016) via EEA

UNESCO world natural heritage sites (2013) via WDPA

UNESCO biosphere reserves via UNESCO

OpenStreetMap



FRIEDRICH-ALEXANDER  
UNIVERSITÄT  
ERLANGEN-NÜRNBERG